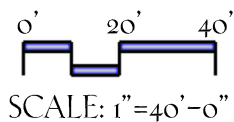
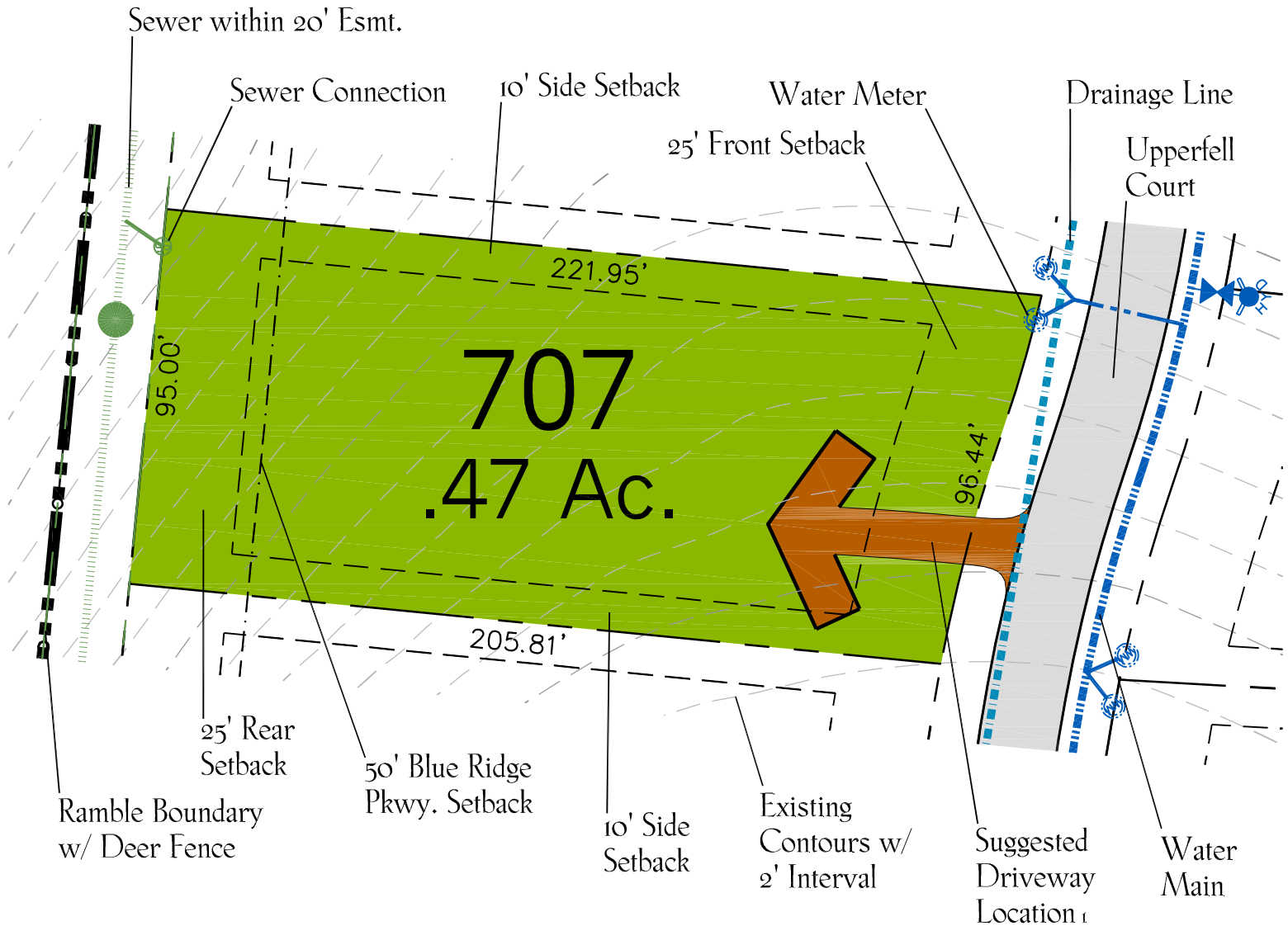
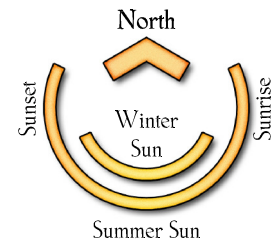


Lot 707

Exhibit A



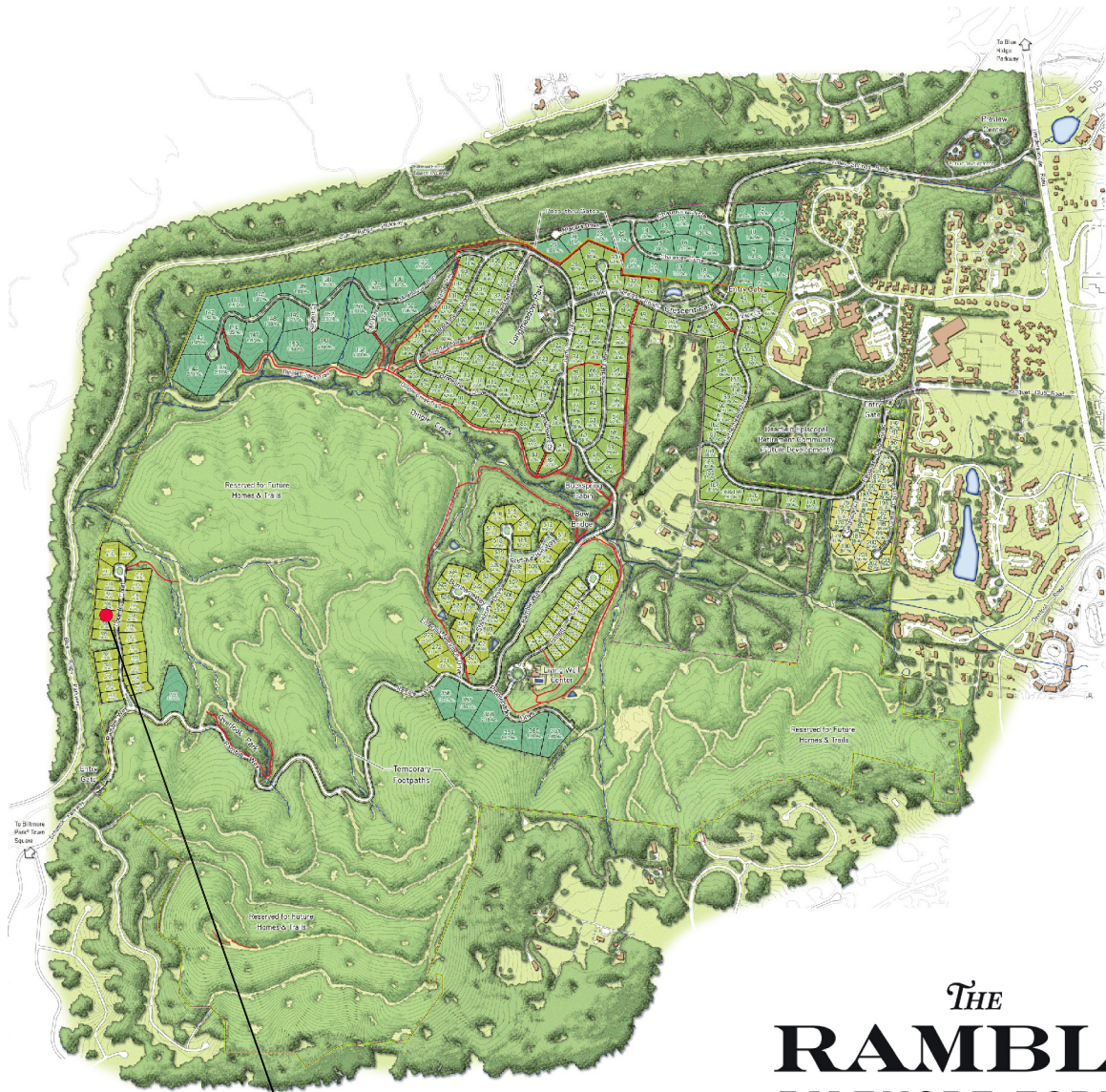
- Notes: 1. The "suggested driveway location" indicated is a preliminary recommendation based on topography, visibility and other considerations. Final driveway locations will be determined through the site design and design review process.
2. Utility locations shown are based on design (not as-built) information.



© 2017 Ramble Biltmore Forest LLC. A portion of The Ramble is in unincorporated Buncombe County. This portion of the property may remain part of Buncombe County or may be annexed into the Town of Biltmore Forest or the City of Asheville. Setbacks shown on this plan are as established by The Ramble Design Guidelines. Lot acreage and boundary dimensions are preliminary and subject to recording of the final plat. Final surveyed acreage and dimensions may vary. Topography shown is from aerial survey. Contours are at a 2 foot interval. This plan is for illustrative purposes only and subject to change. Buyer should refer to final plat for detailed lot descriptions prior to closing.

October 24, 2017

Location



Lot 707

THE
RAMBLE
BILTMORE FOREST



A Biltmore Farms Community

ramblebiltmoreforest.com

Phone: (828) 274-1336

Lot Information

Address: 136 Upperfell Court

Neighborhood: Terrace

Lot Size: .47 Acre

Features: Close to Greenspace

Easy Access to Trail System

Near South Gate & Biltmore Park