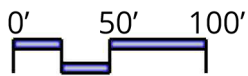
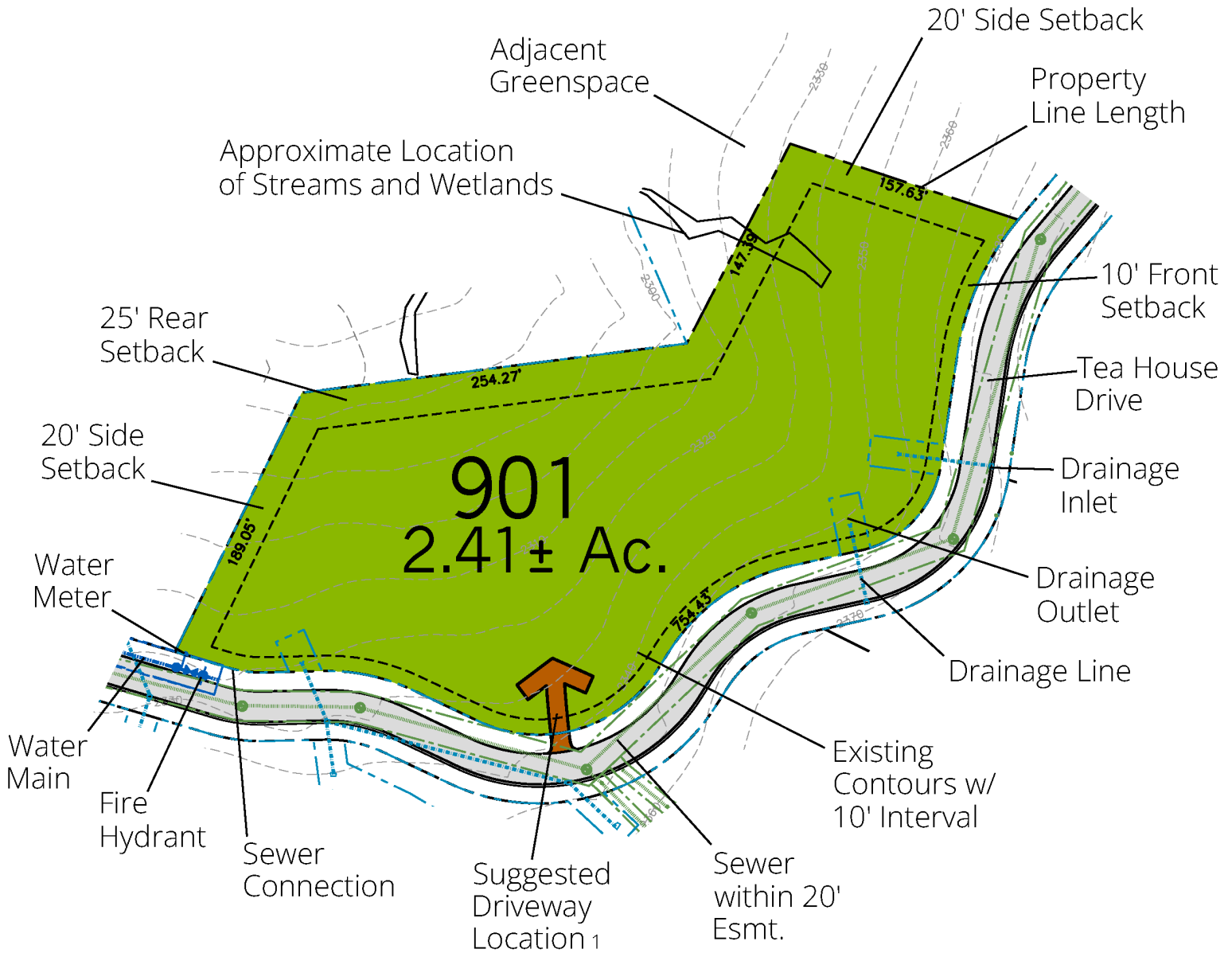


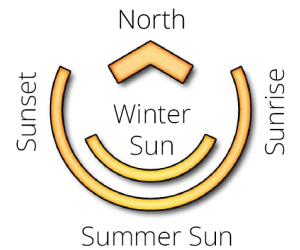
# Lot 901



SCALE: 1"=100'-0"

**Notes:**

1. The "suggested driveway location" indicated is a preliminary recommendation based on topography, visibility, and other considerations. Final driveway locations will be determined through the site design review process.



© 2024 Ramble Biltmore Forest LLC. A portion of The Ramble is in unincorporated Buncombe County. This portion of the property may remain part of Buncombe County or may be annexed into the Town of Biltmore Forest or the City of Asheville. Setbacks shown on this plan are as established by The Ramble Design Guidelines. Lot acreage and boundary dimensions are preliminary and subject to recording of the final plat. Final surveyed acreage and dimensions may vary. Topography shown is from aerial survey. Contours are at a 2 foot interval. Utility locations shown are based on design (not as-built) information. This plan is for illustrative purposes only and subject to change. Buyer should refer to final plat for detailed lot descriptions prior to closing.

# Location



Lot 901

*THE*  
**RAMBLE**  
BILTMORE FOREST



A Biltmore Farms Community

[ramblebiltmoreforest.com](http://ramblebiltmoreforest.com)  
(828) 274-1336

## Lot Information

Address: 644 Tea House Drive

Neighborhood: Woodland Preserve

Lot Size: 2.41± Acres

Price: \$875,000

Features: Adjacent to Open Space

On Ducker Mountain, Potential Long Range Views

Near Living Well Center & South Gate